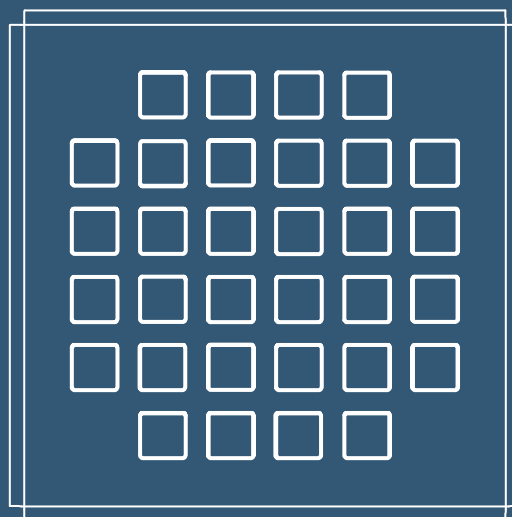




## Building Drainage



# 2021

Product Price List

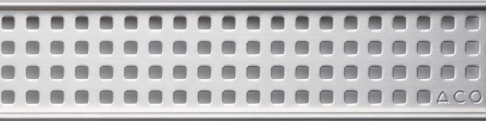
# Plus

ACO ShowerDrain

Effective January 1, 2021

# ACO Plus ShowerChannel

## Square



Finish	Price \$	Part No.	Length in (mm)	Weight lbs
Brushed Stainless	129.00	143150	27 (700)	3.2
	145.00	143151	36 (900)	3.5
	162.00	143152	48 (1200)	4.5
Matte Black	143.00	143170	27 (700)	3.2
	166.00	143171	36 (900)	3.5
	194.00	143172	48 (1200)	4.5
Satin Bronze	200.00	143240	27 (700)	3.2
	234.00	143241	36 (900)	3.5
	276.00	143242	48 (1200)	4.5

ACO Plus ShowerChannel available in complete units only. Complete unit includes:

- Shower channel
- Grate option
- Strainer
- Drain flange
- (2) leveling feet
- Threaded Adapter
- Grate lifting key
- Installation instructions

The 2.0" threaded adapter is compatible with most 2.0" drain flanges, making the product universal and easy to install.

## Wavy



Finish	Price \$	Part No.	Length in (mm)	Weight lbs
Brushed Stainless	129.00	143155	27 (700)	3.2
	145.00	143156	36 (900)	3.5
	162.00	143157	48 (1200)	4.5
Matte Black	143.00	143175	27 (700)	3.2
	166.00	143176	36 (900)	3.5
	194.00	143177	48 (1200)	4.5
Satin Bronze	200.00	143245	27 (700)	3.2
	234.00	143246	36 (900)	3.5
	276.00	143247	48 (1200)	4.5

## Tile-In



Finish	Price \$	Part No.	Length in (mm)	Weight lbs
Stainless	129.00	143145	27 (700)	3.8
	145.00	143146	36 (900)	4.0
	162.00	143147	48 (1200)	5.0

# ACO Plus ShowerPoint

## 4" Square



Finish	Price \$	Part No.	Length in (mm)	Weight lbs
Polished Chrome	104.00	143126	3.54 (90)	1.5
Matte Black	104.00	143127	3.54 (90)	1.5
Satin Bronze	104.00	143128	3.54 (90)	1.5
Brushed Nickel	104.00	143125	3.54 (90)	1.5

## 4" Tile-In



Finish	Price \$	Part No.	Length in (mm)	Weight lbs
Tile	104.00	143129	3.15 (80)	1.2

### 4" BODY

4" Body complete unit includes:

- Grouting plate
- Strainer
- Point drain body
- Drain flange adapter
- Grate option
- Grate lifting key
- Installation instructions



## 6" Square



Finish	Price \$	Part No.	Length in (mm)	Weight lbs
Polished Stainless	163.00	37078	6.0 (150)	3.0

## 6" Wavy

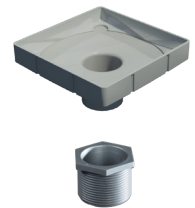


Finish	Price \$	Part No.	Length in (mm)	Weight lbs
Polished Stainless	163.00	37080	6.0 (150)	3.0

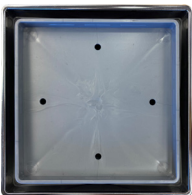
### 6" BODY

6" Body complete unit includes:

- Stainless Steel Grate
- ABS Body
- Stainless Steel Lifting Key
- Threaded Adaptor



## 6" Tile-In



Finish	Price \$	Part No.	Length in (mm)	Weight lbs
Polished Stainless	59.00	37100	6.0 (150)	2.0

ACO Plus ShowerPoint is available in complete units only.

# ACO Terms & Conditions



Full ACO, Inc. Terms  
and Conditions of Sale

**PAYMENT** - All pricing is in U.S. Dollars.

**TERMS** - Net 30 days from date of invoice. A service charge of 1.5% per month will be charged on all invoices unpaid 30 days after invoice date (equal to 18% annually).

**SUPPLY** - All purchase orders will have a 24 to 48 hour processing time.

**FREIGHT** - F.O.B. ACO.

- Prepaid on orders in the Continental United States of \$1,000 NET or more. Excludes custom orders and orders shipping to Alaska, Hawaii and Export.

**MISSING MATERIAL** - Missing material must be reported to ACO's Customer Service Department within 48 hours of receipt of shipment.

**DAMAGED MATERIAL** - Damaged material must be noted on Bill of Lading at final destination point. The receiver must file a freight claim with the carrier. ACO is not responsible for material damaged in transit.

**TAXES** - All State and Federal taxes are additional.

**CHANGES** - ACO, Inc. reserves the right to change prices, design, and materials of any products listed at any time.

**RETURNS** - Purchased material must be returned within 90 days of initial receipt. Returned material is subject to a 35% restocking charge. Prior return authorization (RGA) must be obtained from ACO before any material is shipped. Returned material is subject to the following conditions:

1. All returned material should be in resale condition.
2. Material must be returned to ACO within 30 days of receipt of RGA.
3. All freight costs are the responsibility of those returning material.
4. Products damaged in shipment to ACO ShowerDrain will be noted on Bill of Lading and customer will be notified in order to process their claim with their carrier.
5. Non-standard material cannot be returned for credit.

**WARRANTY** - ACO, Inc. provides a total coverage warranty on manufacturing and craftsmanship from date of sale on ACO ShowerDrain products, parts and accessories provided that:

1. ACO ShowerDrain products have been installed according to the recommended installation instructions as described in the current ACO Installation Guidelines.
2. ACO ShowerDrain products have been used for a bathroom application, and the unit and its components have not been altered or changed from its original factory condition in any way.
3. Total Coverage Warranty of 25 years on Premium products (Stainless Steel).
4. Total Coverage Warranty of 10 years on Plus Products (Plastic Body).
5. 2 Year Total Finish Coverage on all applied finishes to Stainless Steel Parts and Accessories.

---

## ACO, Inc.

West Sales Office  
825 W. Beechcraft Street  
Casa Grande, AZ 85122  
Tel: (520) 421-9988  
Toll-Free: (888) 490-9552  
Fax: (520) 421-9899

Northeast Sales Office  
9470 Pinecone Drive  
Mentor, OH 44060  
Tel: (440) 639-7230  
Toll-Free: (800) 543-4764  
Fax: (440) 639-7235

Southeast Sales Office  
4211 Pleasant Road  
Fort Mill, SC 29708  
Toll-Free: (800) 543-4764  
Fax: (803) 802-1063

info@acousa.com  
[www.acousa.com](http://www.acousa.com)

© December 2020 ACO, Inc.

All reasonable care has been taken in compiling the information in this document. All recommendations and suggestions on the use of ACO products are made without guarantee since the conditions of use are beyond the control of the company. It is the customer's responsibility to ensure that each product is fit for its intended purpose and that the actual conditions of use are suitable. ACO, Inc. reserves the right to change products and specifications without notice.  
Print #SD801 V.1

**ACO. creating  
the future of drainage**

